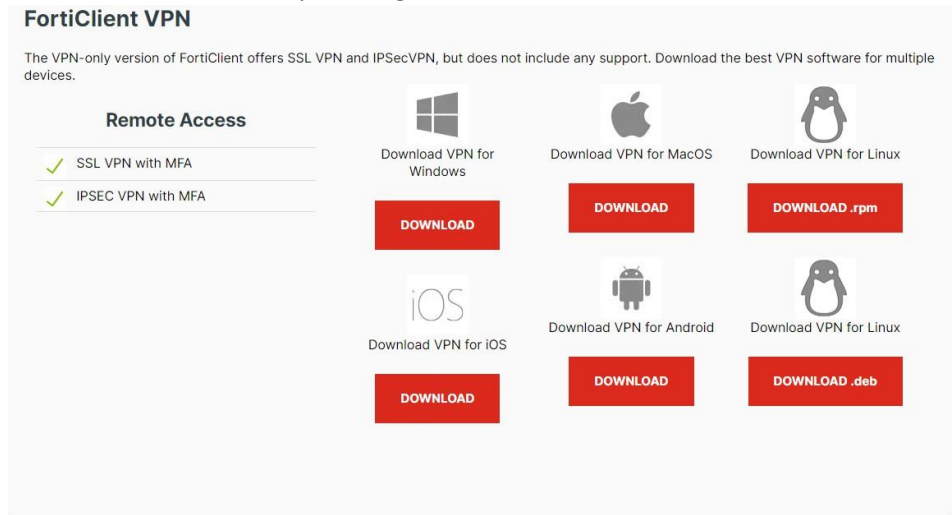




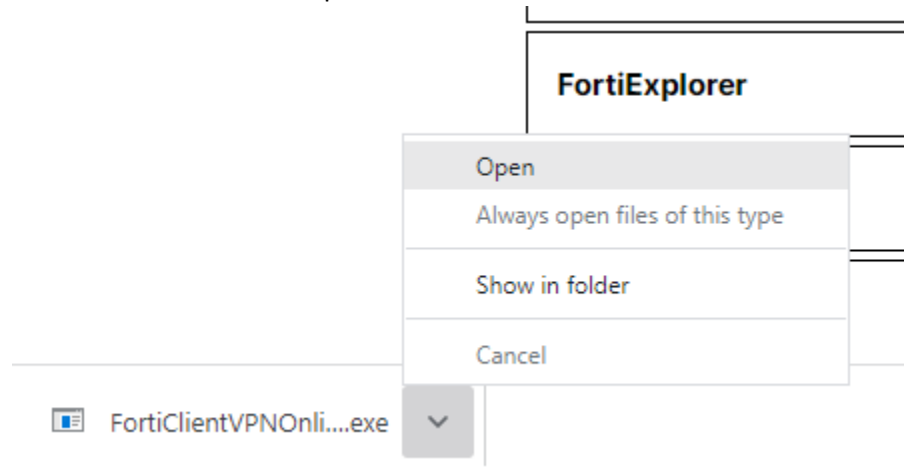
Installing FortiClient

1. Download:

- Open your web browser and navigate to: <https://www.fortinet.com/support/product-downloads>
- Select download “Forti Client VPN only” and again, select “Download VPN for Windows”



- Wait for download to complete and double click to run the installer.

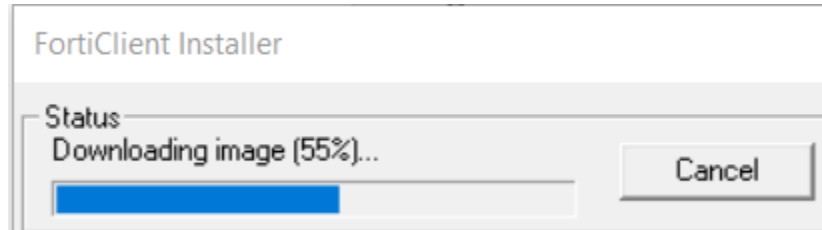


2. Installation:

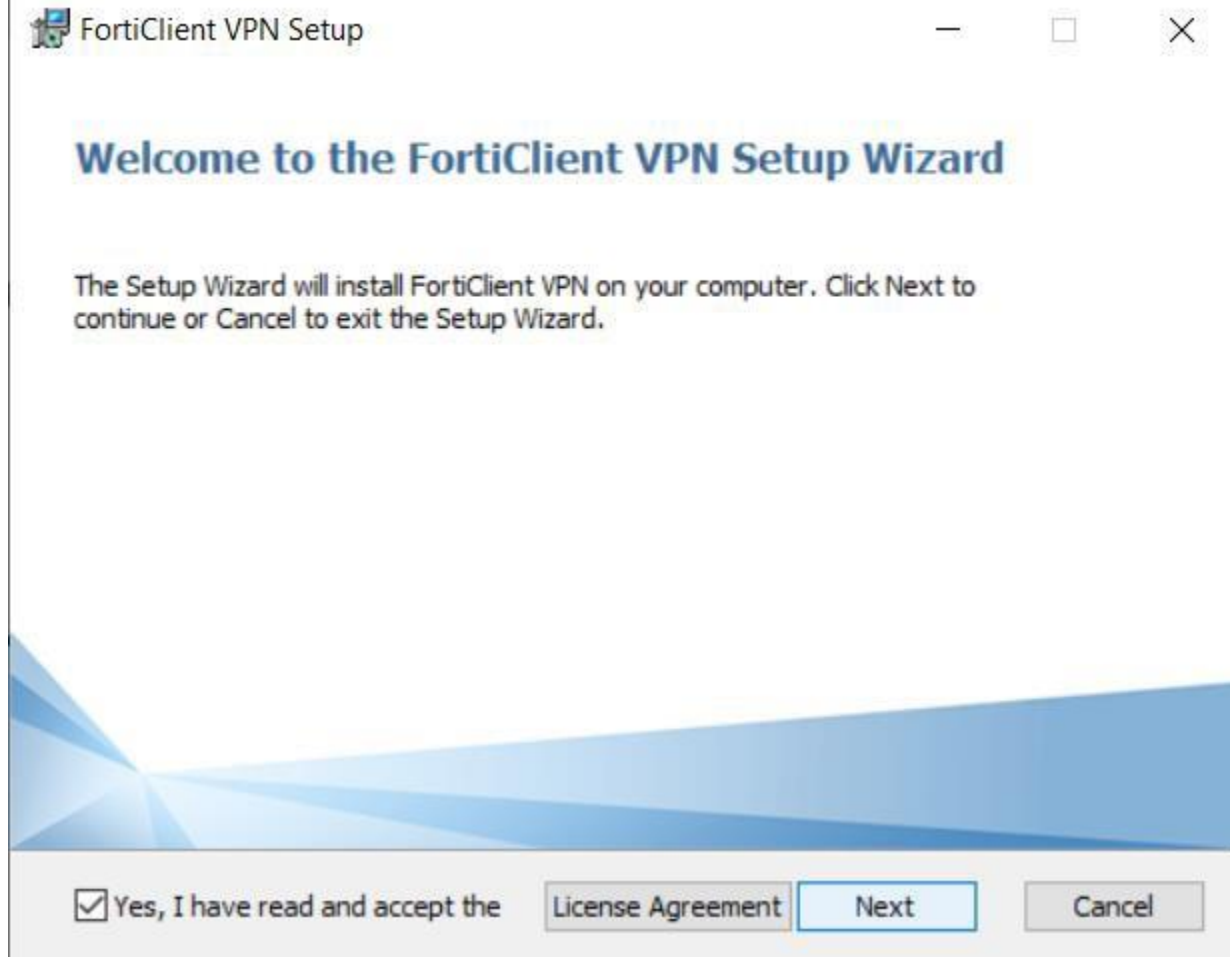
- Run the downloaded file and allow administrative permissions



- b. Wait for the application to finish downloading the most up-to-date version.

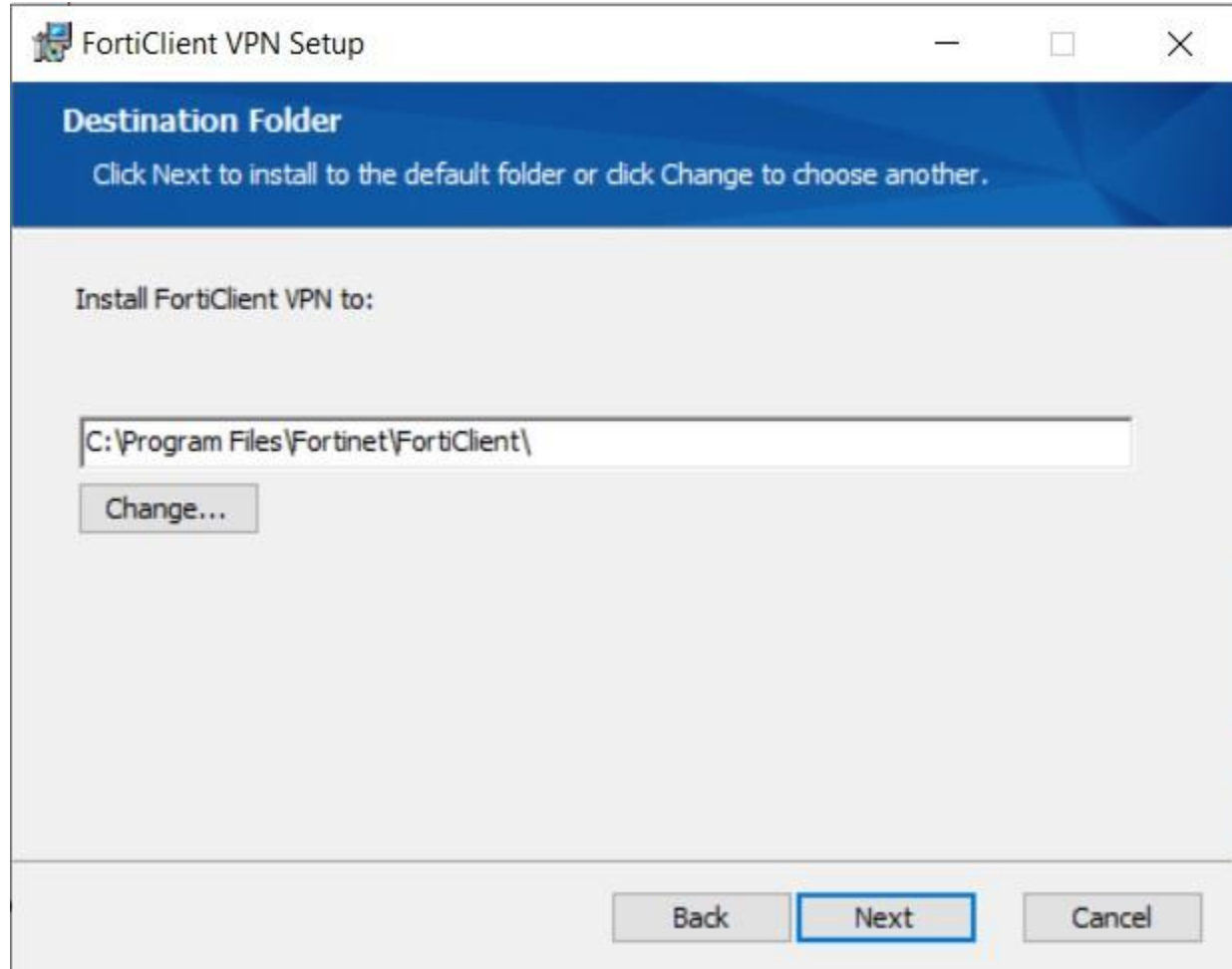


- c. Check the Terms of Service box and “Next” and proceed through.



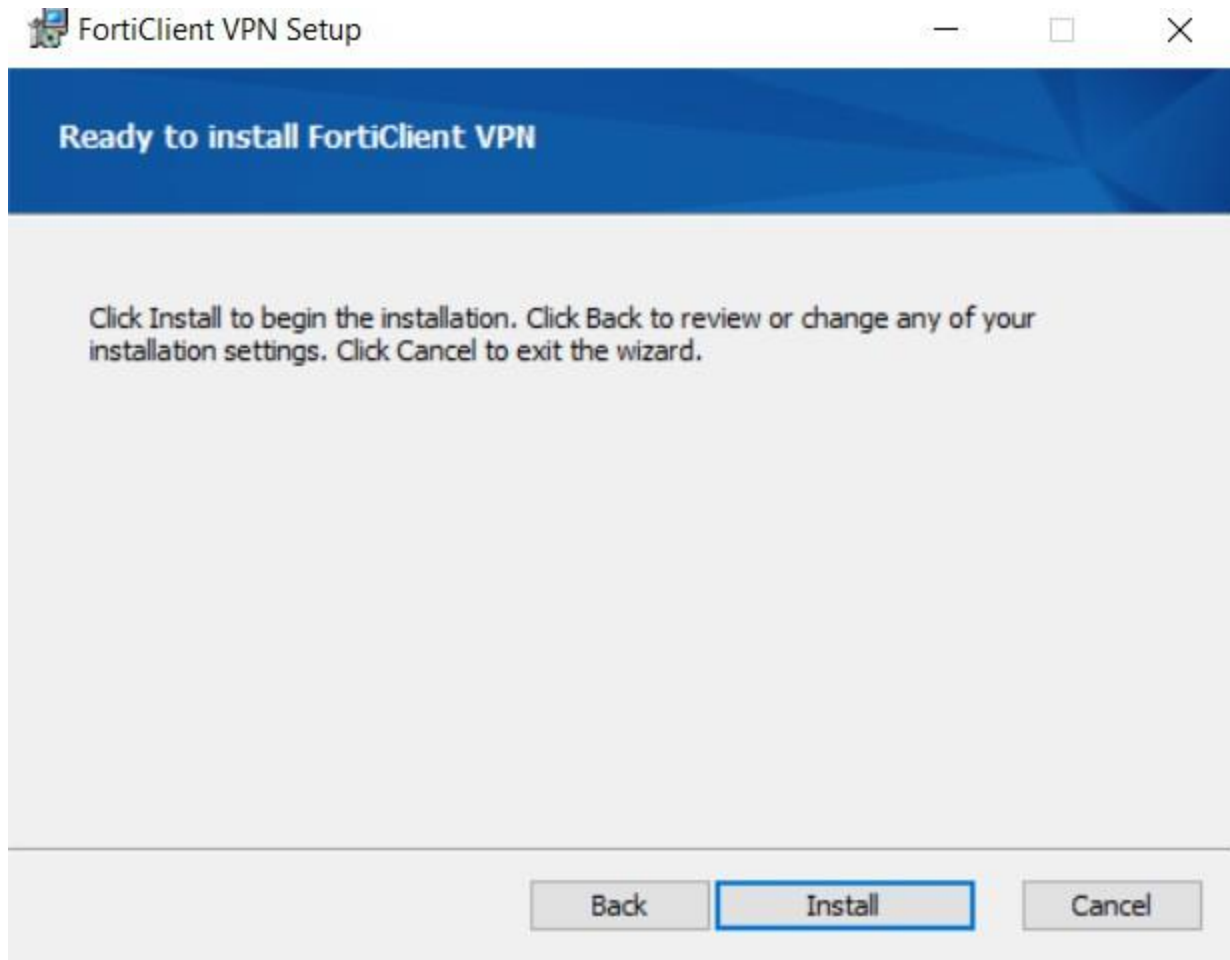


- d. Allow it to install in the default installation path, just hit “Next”.



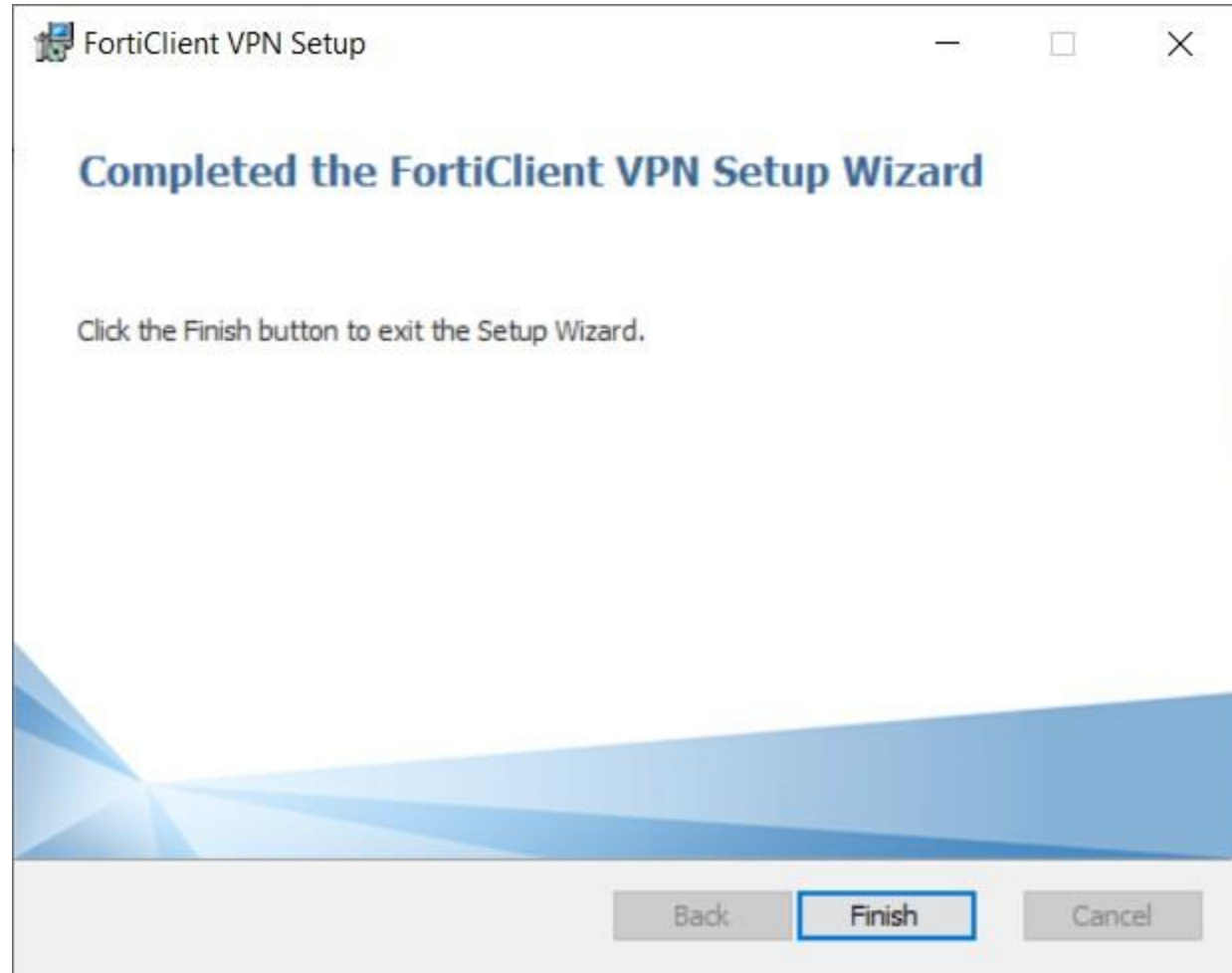


- e. Hit the “Install” button to start installation.





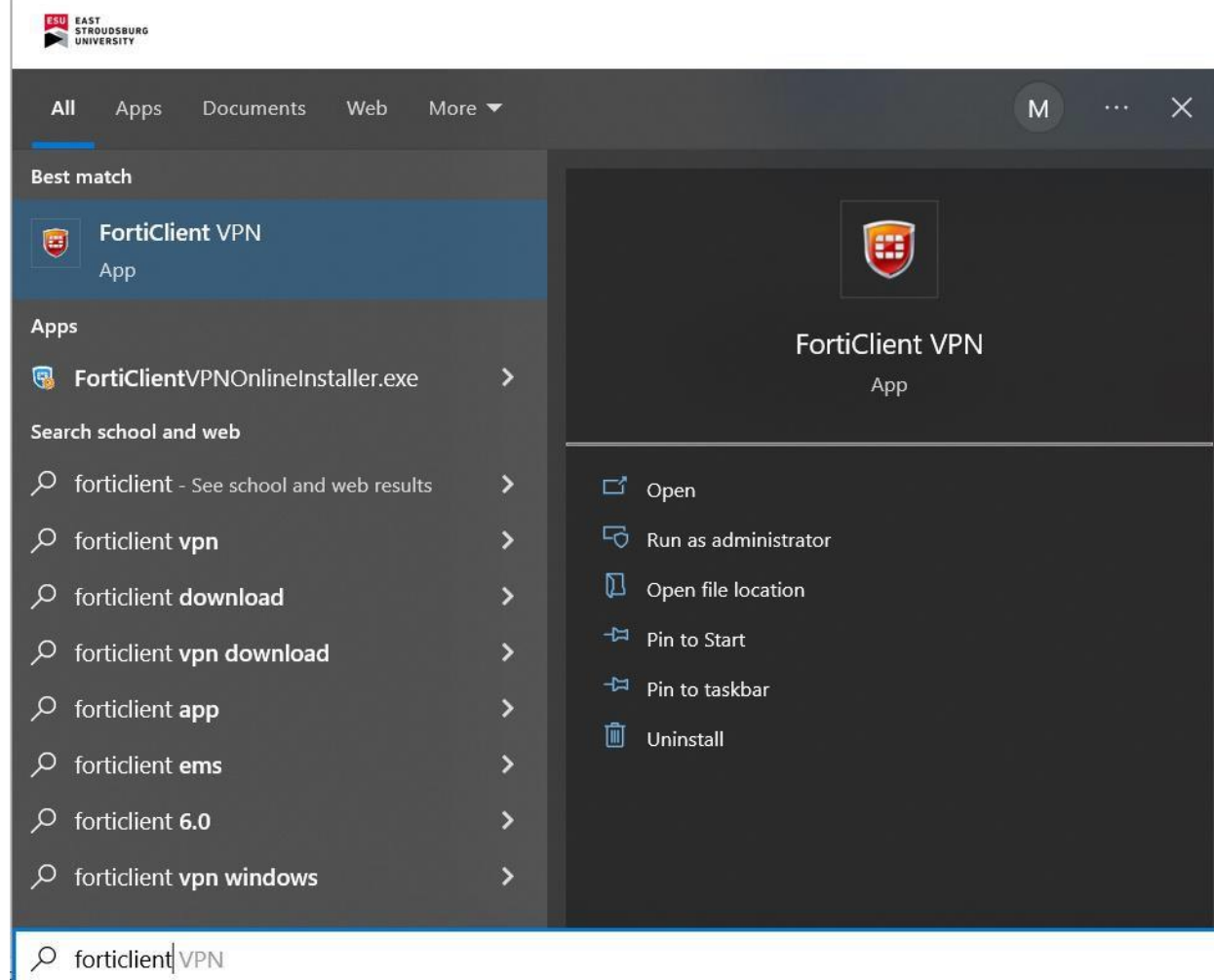
- f. Wait for the application to be installed and click “Finish”.



3. Configuration:

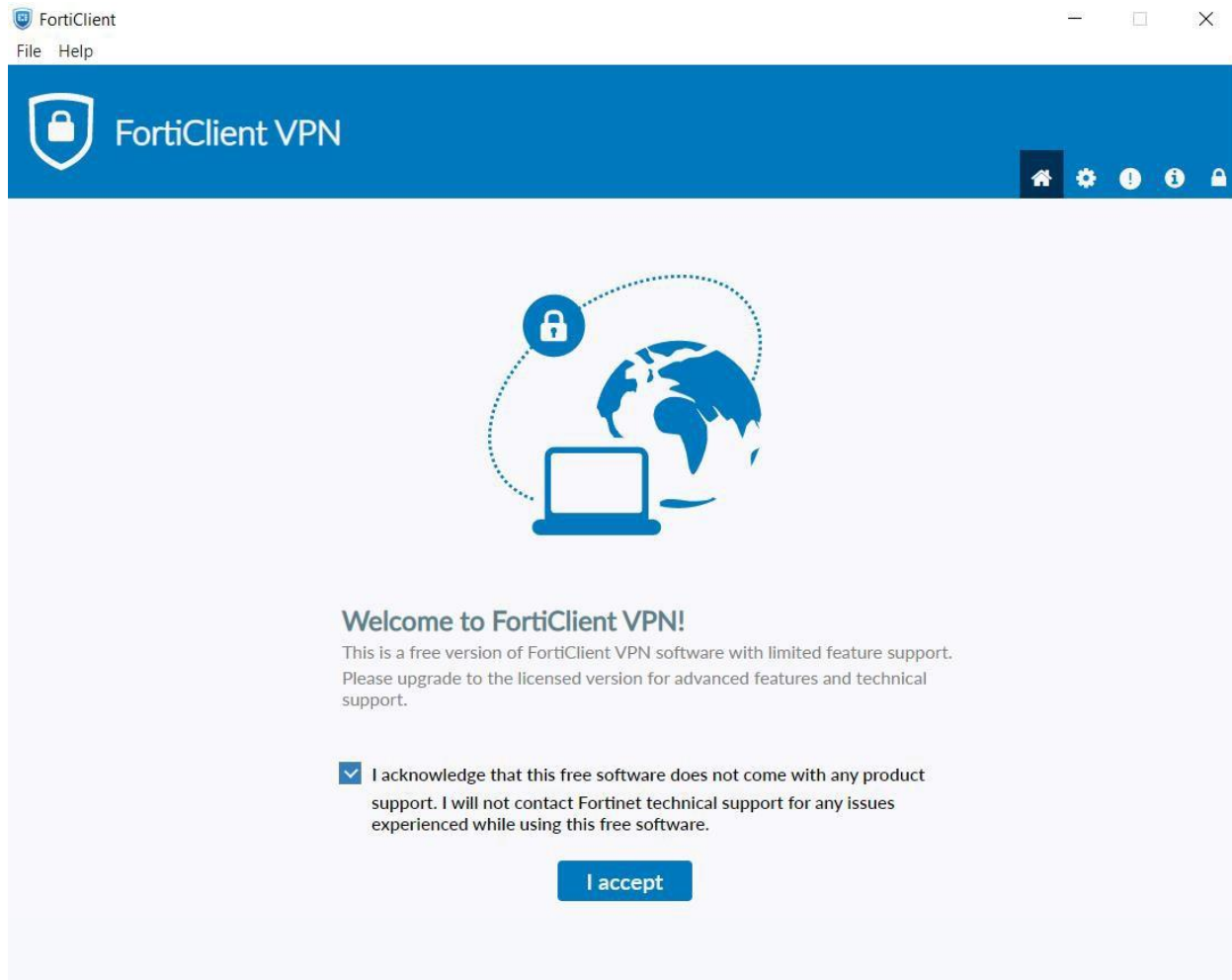


- a. Hit the Windows key next to alt and type “forticlient” and then click on it.



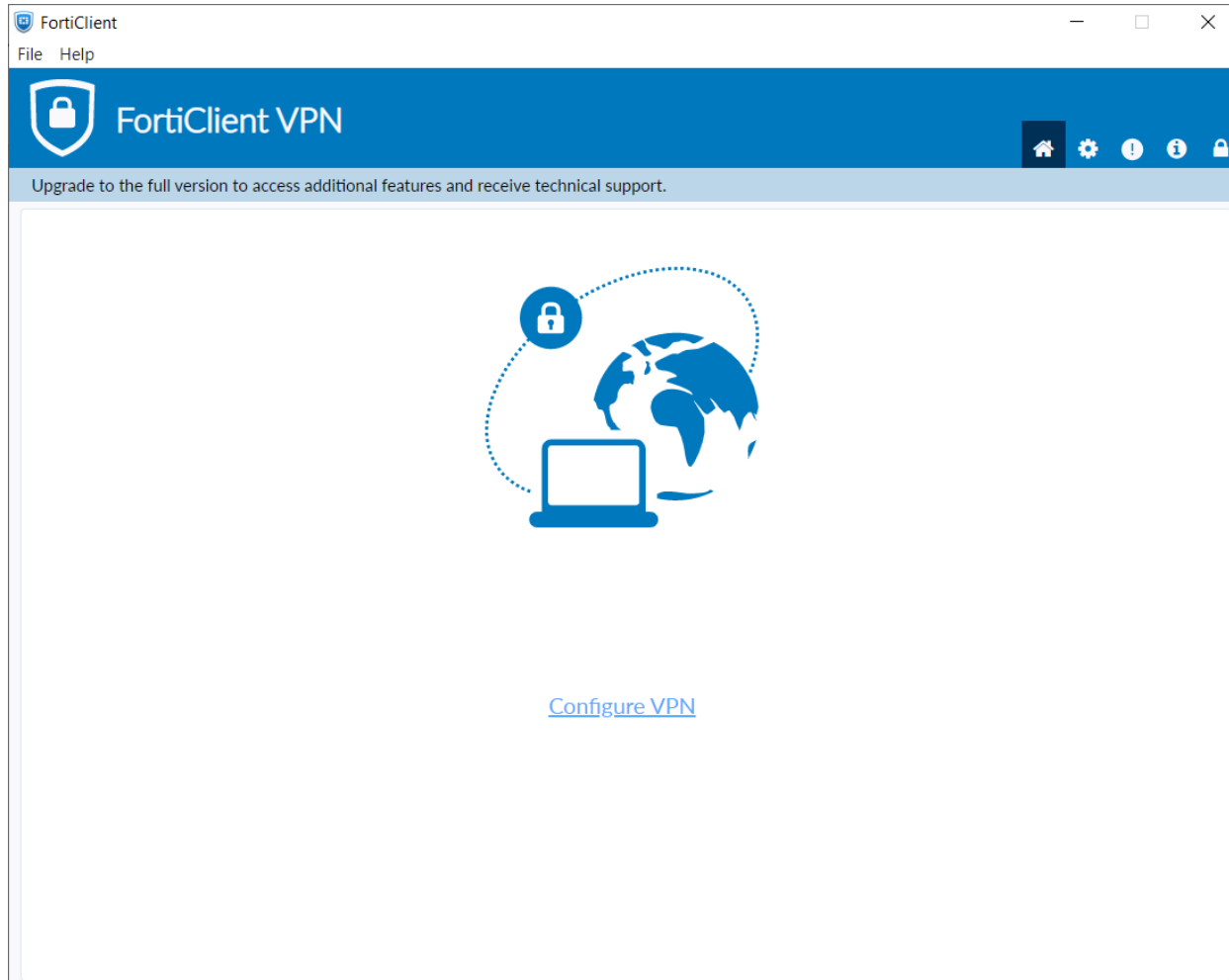


- b. Check the box and acknowledge the terms of service.





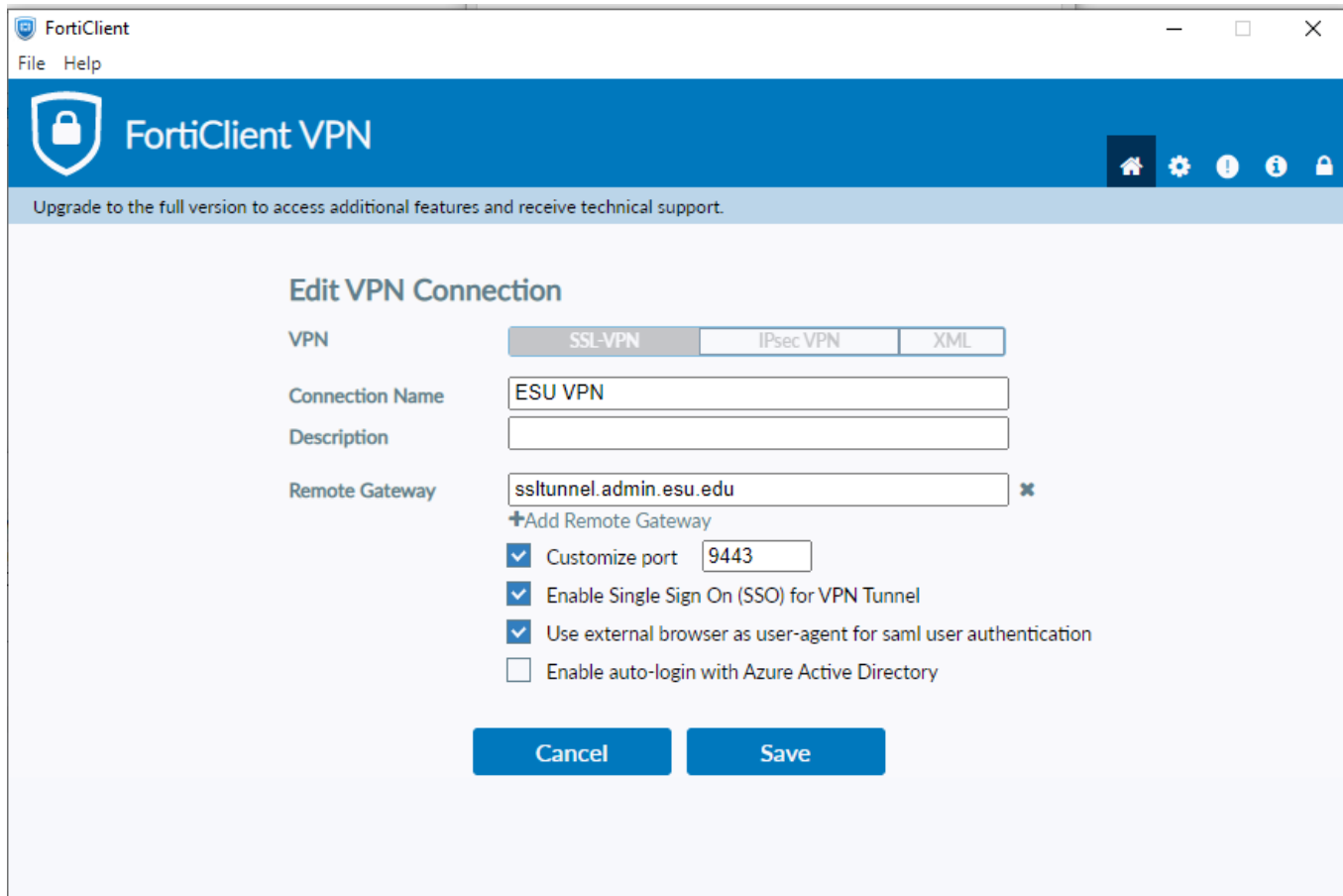
- c. Click on “Configure VPN”.



- d. Enter the following for configuration:
- i. Name: **ESU VPN**
 - ii. Remote Gateway: **ssl tunnel.admin.esu.edu**
 - iii. Check the “Custom Port” box and enter:
9443
 - iv. Check "Enable Single Sign On (SSO) for VPN Tunnel (Note: you may have to move off it after checking it to see it got checked)
 - v. Check “Use external browser as user-agent for saml user authentication” (Note: Move off it after checking to see it got checked)



- iv. Hit “Save” and close the application by choosing FILE-->CLOSE

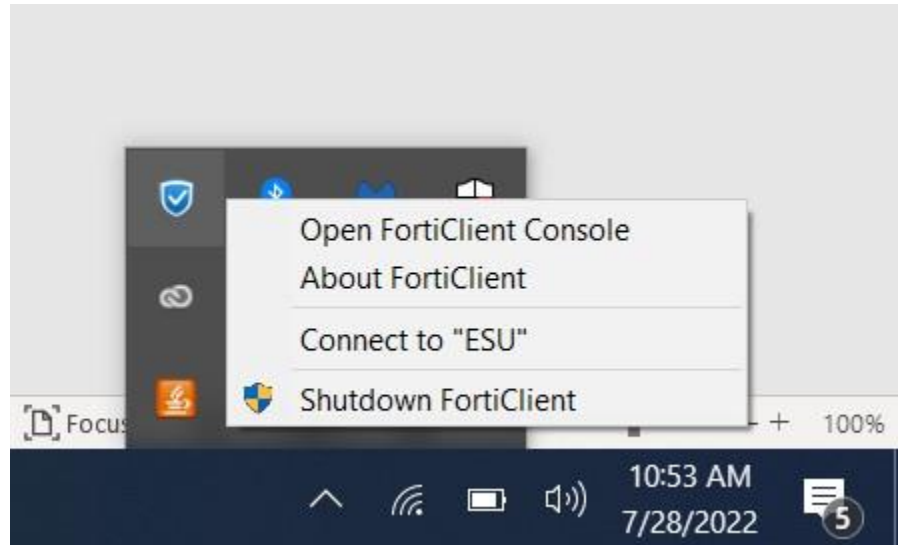


4. Connecting to ESU

- a. Click on the carrot chevron “^” near the network symbol and time clock in the lower right-hand corner of the screen, then right click the blue shield with a check mark and



select "Open FortiClient Console"



- b. Enter your username and password that you use to login to your work computer and email, minus the "@esu.edu" For example: johnsmith@esu.edu is jsmith.



VPN Name

ESU

Username

jsmith

Password

.....

Connect

- c. You're now connected to the ESU VPN, you may remote-desktop to your work computer or browse internal web-resources.

Should you encounter an issue, there is also a video to watch on this installation, here is the link [Setting Up Forti-Client VPN \(youtube.com\)](#). You can also reach out to our helpdesk if you need. 570-422-3789.