

\*\*\*\*\*

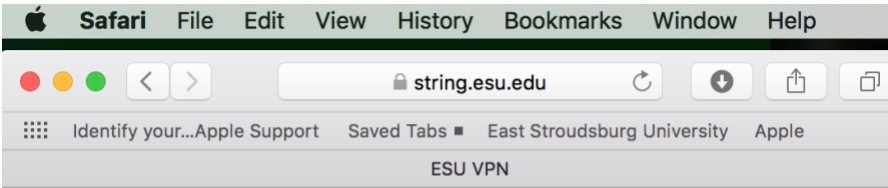
**Please use VPN if you need to connect to SAP, Banner, Files on the servers or your desktop.**

**Please do not use VPN to connect to Myesu Portal, D2L, Passhe Self-service Portal, Email or to surf the internet.**

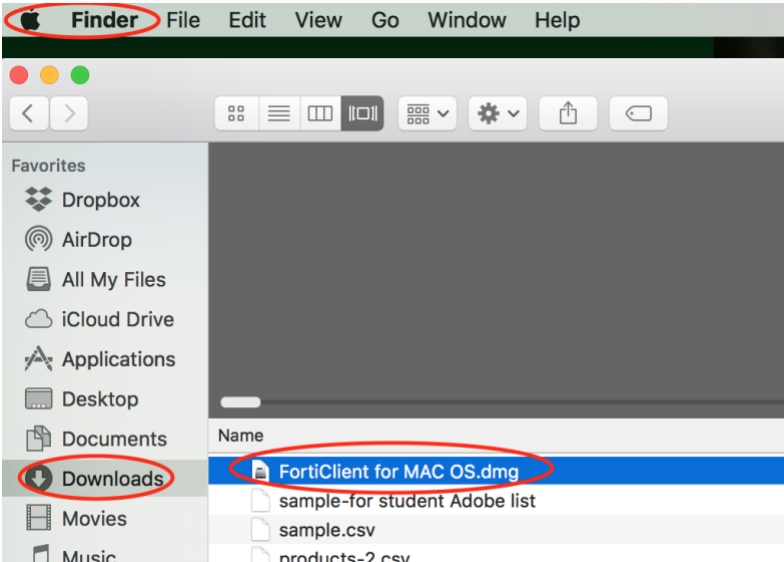
**Please remember to disconnect from the VPN once you are done.**

\*\*\*\*\*

1. Please click on this link <https://string.esu.edu/VPN/> or type it in any internet browser. Click Download VPN Client for the Mac (for versions OSx 10.12 and up through OSx 10.14).



2. Once the download is complete, open the FortiClient for MAC OS.dmg file located in your download folder



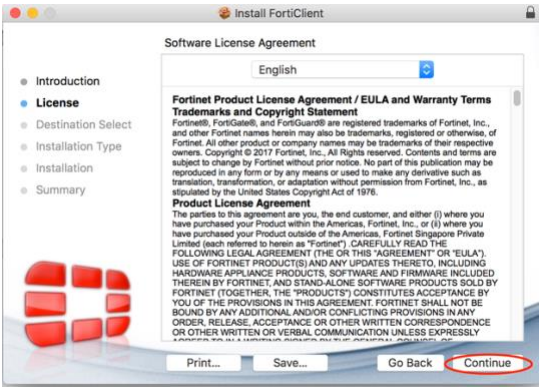
Which will open this window. Double click on the Install icon.



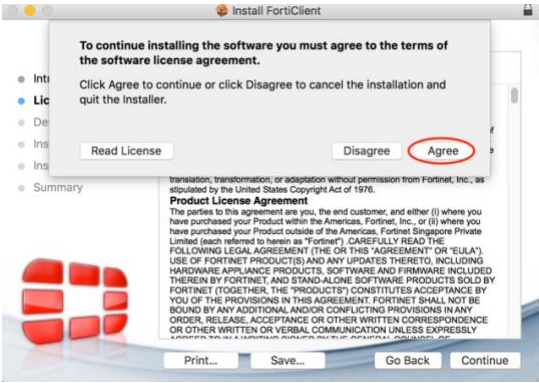
3a. Click on Continue



3b. Click on Continue



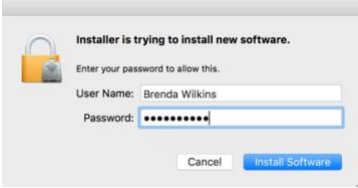
3c. Click on Agree



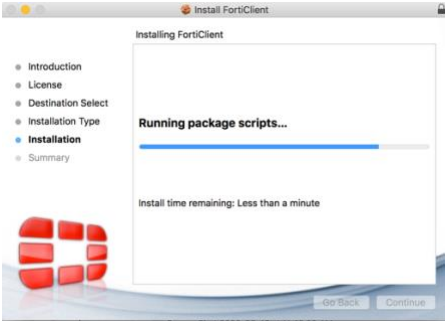
3d. Click on Install



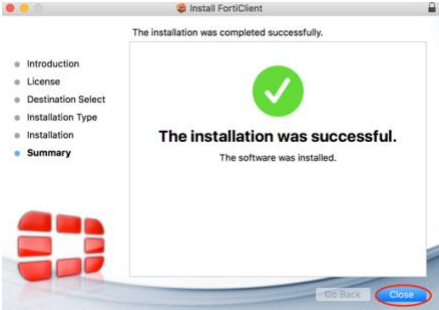
3e. If you see this screen, enter the password for your Mac and click Install Software



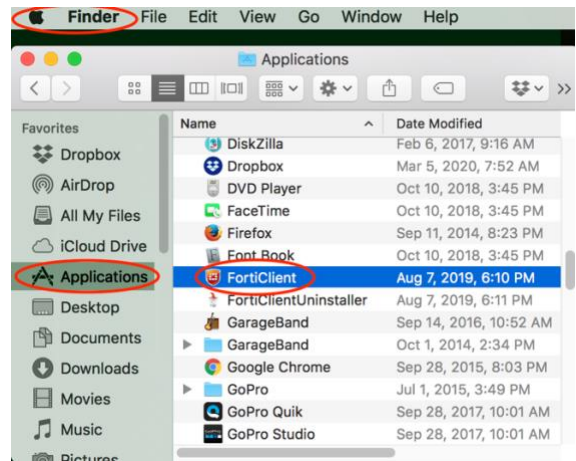
3f. It will install



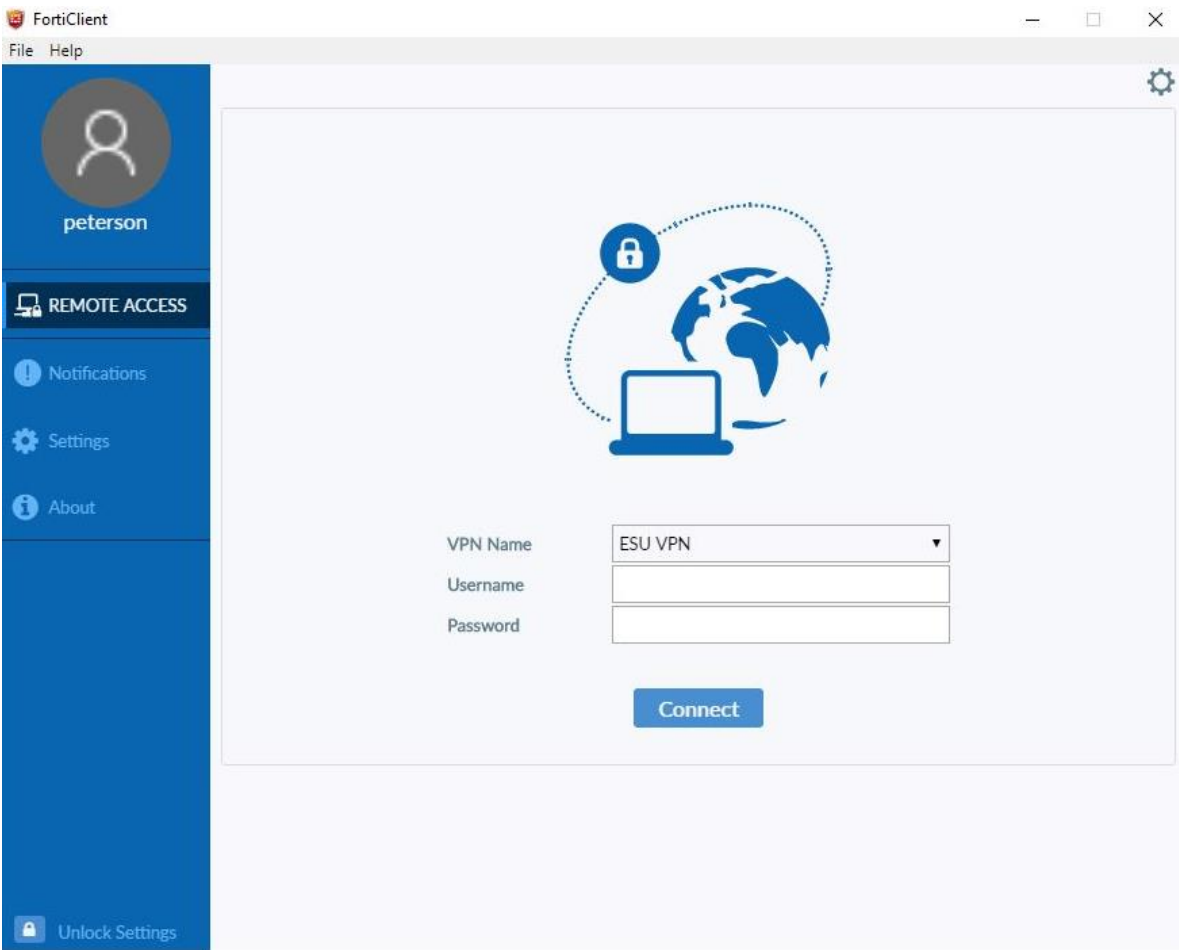
3g. Click Close



5. Open the FortiClient icon located in your Applications folder



6. Once open, login with your ESU Credentials



Once connected, you will be able to use Banner, SAP or if necessary, Remote Desktop Connection to connect to your computer.

