



GROWING TOGETHER

A YEAR OF MOMENTUM



EAST STROUDSBURG
UNIVERSITY

2024–2025 Annual Report



This past year, East Stroudsburg University made remarkable strides. We found momentum in impact, purpose in innovation, and possibility in opportunity. The 2024-2025 Annual Report is a story of students, faculty, and a university moving forward, together. It is a story of growth.

As we reflect on this past year's progress, one thing remains certain: **ESU is Where Warriors Belong.**





A YEAR OF PURPOSEFUL GROWTH

It is my pleasure to share East Stroudsburg University's 2024–2025 Annual Report, a year defined by growth, achievement, and community. Inside, you will see the milestones we reached together and the momentum that continues to drive ESU forward.

Rising retention rates reflect the impact of strengthened student support, including improved academic advising, expanded financial aid assistance, wellness initiatives, and the launch of the GenOne and Transfer student clubs. These efforts ensure students have the resources they need to persist toward graduation.

With enrollment increasing, our campus continues to evolve. This year we completed the rebranding of the Mattioli Recreation Center, upgraded the Wolbers Tennis Courts, and advanced plans for a dedicated center for hospitality, each project enhancing the student experience and sense of belonging. Experiential learning also expanded through partnerships with local businesses, school districts, healthcare facilities, nonprofit organizations, and collaborations across university departments, giving students valuable skills for today's workforce.

Our student-athletes excelled academically and athletically, with seven teams reaching postseason play, including an NCAA Division II World Series appearance by Warriors baseball, and maintaining strong academic performance across all programs.

**This report highlights what makes ESU a place
Where Warriors Belong. Thank you for being part
of our progress and our future.**

KENNETH LONG, PRESIDENT

MOMENTS THAT DEFINED OUR YEAR

From the excitement of Move-In to the pride of Commencement, the 2024–2025 academic year was filled with achievements that reflect ESU's vibrant, growing community. Our students excelled, our campus expanded, and our partnerships strengthened the ties that connect ESU to the region and beyond. Students represented ESU at the Workforce Exploration Program in Washington, D.C., and one senior brought Warrior energy to the field as a Minor League Baseball Mascot—proof that passion and purpose take many forms. It's never been more clear that ESU is Where Warriors Belong.



“Big schools are great, but there’s something about smaller schools. There’s that one-on-one connection—the professors and staff know if you’re struggling and can provide resources. Here, you’re more than just a number.”

RICHERMY BATISTA '25, POLITICAL SCIENCE & ECONOMICS



Commencement celebrated the achievements of 1,086 graduates.



Admitted Students Celebration welcomed future Warriors to campus for a day of connection and discovery.



Move-In kicked off the academic year with excitement and Warrior spirit.



Homecoming brought Warriors past and present together for a weekend of celebration and pride.



The Economic Outlook Summit brought together business and community leaders to discuss the future of workforce development.



“The faculty relationships really made me want to go to ESU. I talked to them and opened up; I felt like I could be myself.”

PHOEBE BRENZEL '24, EXERCISE SCIENCE

PREPARING STUDENTS FOR IN-DEMAND CAREERS

At ESU, learning extends far beyond the classroom. Through immersive, hands-on experiences and strong industry partnerships, students gain the skills and confidence to thrive in today's evolving workforce. This year, ESU expanded experiential opportunities across disciplines such as Health Sciences, Education, Business and more—connecting learning to real world impact.

Nursing students collaborated with theatre students in an interactive patient-care simulation, sharpening both clinical and communication skills.



The EPIC Work-Based Learning Partnership provided students with paid, career-relevant experience while meeting regional workforce needs.



The Aspiring Educators Pathway Program continued to empower future educators through collaborative, dynamic, experience-rich training programs.



Environmental science majors helped protect turtle populations through local field internships—combining conservation and coursework in meaningful ways.

ACADEMIC AND CAREER OUTCOMES

Top 5 Majors

- 1 Business Management
- 2 Psychology
- 3 Exercise Science
- 4 Early Childhood Education
- 5 Biology

Nursing Graduates

100% employed
within six months of graduation

Education Graduates

82% certified
within three months

SUPPORTING EVERY WARRIOR'S JOURNEY

True growth at ESU means ensuring every student has what they need to persist and succeed. This year, retention improved across all four colleges and among undeclared students. From academic advising and tutoring to financial aid and wellness initiatives, ESU's wrap-around student support fosters belonging, resilience, and achievement.

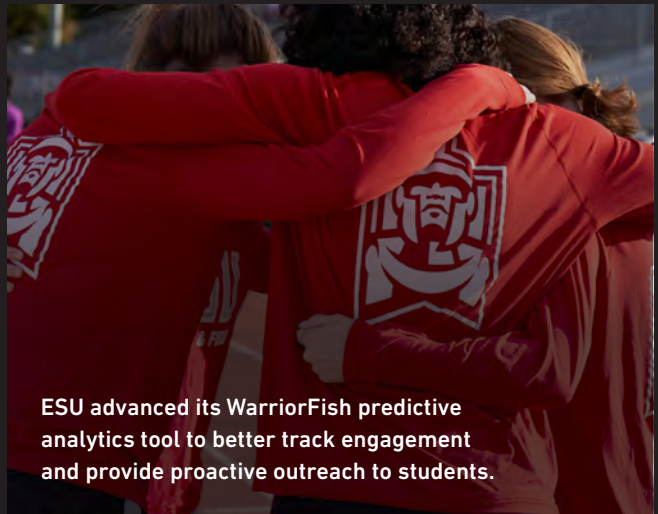




GenOne Week and Transfer Week celebrated first-generation and transfer student achievements, building stronger community connections.



The Clear Path Scholars attended a national conference, representing ESU's commitment to supporting student success from enrollment through graduation.



ESU advanced its WarriorFish predictive analytics tool to better track engagement and provide proactive outreach to students.

UNIVERSITY-WIDE HIGHLIGHTS

Second-Year Retention Rate **75%** |  **ESU's highest in at least 10 years**

RETENTION BY COLLEGE (2024 VS 2020)

College of Education 74.2% ↑ from 71.6%	College of Health Sciences 84.8% ↑ from 77.9%	College of Arts & Sciences 73.5% ↑ from 65.8%
College of Business & Management 71.7% ↑ from 62.4%	Degree-Seeking Undeclared 67.7% ↑ from 58.0%	



BUILDING SPACES

THAT INSPIRE

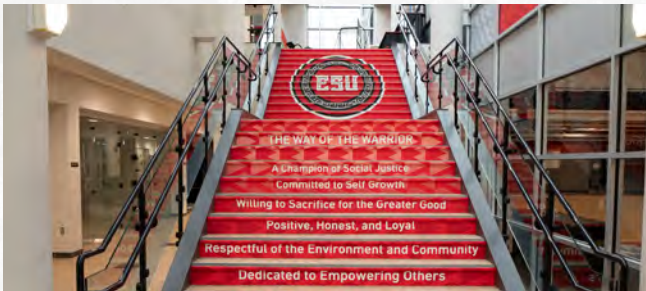
This year brought visible transformation across ESU's campus. New and renewed spaces continue to reflect the university's commitment to creating an environment where students can thrive—academically, socially, and personally. From state-of-the-art learning and recreation facilities to spaces that spark collaboration and community, each project underscores ESU's focus on connection, innovation, and the student experience.



The University Center is in its final stages of construction and will be a dynamic hub for student life, featuring expanded areas for clubs, collaboration, and events.

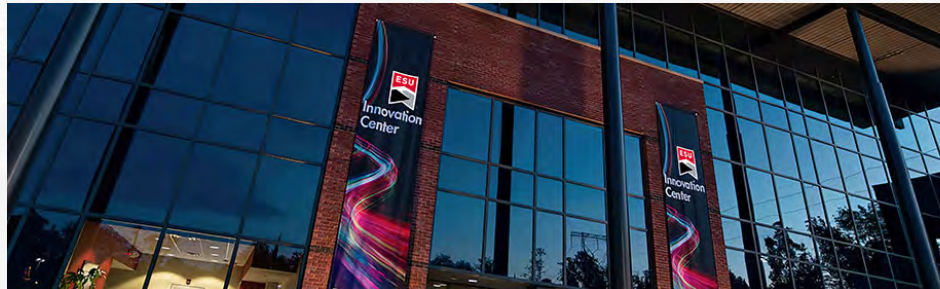


The Mattioli Rec Center completed its rebranding, strengthening ESU's focus on health, wellness, and belonging.



Wolbers Tennis Courts upgrades renewed ESU's commitment to recreation for campus and community.

The revitalized Innovation Center reopened this year, restoring a 51,000-square-foot hub of creativity, entrepreneurship, and research collaboration.



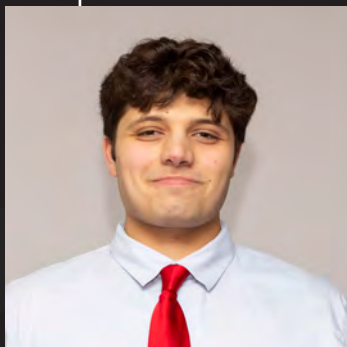
“ Our ongoing investments in upgrades, renovations, and new campus spaces ensure that every student has a place to belong both inside and outside the classroom. These areas for learning, physical and social activity foster connection and strengthen our community.”

KENNETH LONG, PRESIDENT



CONNECTING CAMPUS COMMUNITY

Growth at ESU extends beyond campus. Through partnerships, service, and shared experiences, ESU continues to strengthen its connection with the Pocono region and beyond. This year was another demonstration of how education and community thrive together. The university's success is deeply tied to the region's vitality; when local businesses, schools, and organizations grow, so do opportunities for ESU students.



“I’m most looking forward to making a positive impact on the people around me—both students and teachers.”

FRANCESCO CURTO '25, EDUCATION





The MLK Celebration Breakfast brought together students, alumni, and local partners in celebration of unity and purpose.



The Pink Light Walk united students, faculty, and the community in a heartfelt show of support for breast cancer awareness and research.



The Scholarship Dinner honored the generosity of donors and the achievements of student recipients. Together, they celebrated the life-changing impact of scholarships and the power of giving back.



ESU4Kids continued its legacy of learning, providing enrichment opportunities for local youth.



Students in the Sport Management program coordinated a philanthropic pickleball tournament, raising funds for community causes.



The Athletic Training Program's 50th Anniversary honored decades of Warrior dedication and impact.



“ If you’re given the opportunity to do something or work under someone, say yes. You’ll never get this time back.”

NICOLE KROZSER '23 M'25, FIELD HOCKEY & COMMUNICATION SCIENCES AND DISORDERS

WARRIOR PRIDE

ON AND OFF THE FIELD

At East Stroudsburg University, athletics continues to be a catalyst for growth on the field, in the classroom, and beyond. Warrior student-athletes exemplify the drive, discipline, and teamwork that define ESU’s spirit. Their achievements demonstrate that excellence in competition goes hand in hand with academic success and personal development. Through collaboration, leadership, and community engagement, these young men and women embody what it means to be a student-athlete. After all, rising to the occasion is the way of the Warrior.



Student-athletes maintained a combined GPA of 3.385, exemplifying commitment to both academics and athletics.

7 TEAMS IN NCAA POSTSEASON

Field Hockey

Women's Lacrosse

Football

Men's Basketball

Baseball

Women's Cross Country

Softball

Academic
All-America
Selections

7

Teams with
3.0 GPA or
Higher

100%


PSAC Scholar-Athletes

64%

(361 Students)



ESU's Baseball Team advanced to the Division II College World Series, earning national recognition and uniting the Warrior community.



“That’s one of the wonderful things about schools like ESU. You get to interact with the students and give them a very hands-on research experience where they learn directly under me, and I directly mentor them.”

DR. GREGORY BOYCE, ASSOCIATE PROFESSOR OF CHEMISTRY AND BIOCHEMISTRY

INSPIRING DISCOVERY AND INNOVATION

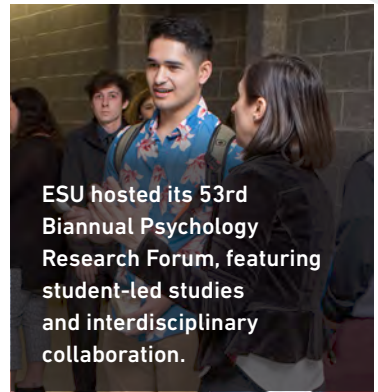
From undergraduate research to faculty mentorship, ESU’s growing research culture reflects the university’s dedication to innovation and inquiry. Students and professors work side by side to pursue ideas that shape industries and expand opportunity.



Biochemistry major Luna Mumma '27 earned second place at the American Chemistry Association's MidAtlantic Regional Meeting, showcasing her research on organic catalysts.



The Warrior Startup Challenge encouraged entrepreneurial thinking, connecting students with regional leaders and turning ideas into impact.



ESU hosted its 53rd Biannual Psychology Research Forum, featuring student-led studies and interdisciplinary collaboration.

EXTERNAL FUNDING

\$3,591,813 & 19 awards funded

4 awards funded from state agencies

4 awards funded from federal agencies

9 awards funded from private agencies

2 awards funded from PASSHE

35/19 proposals requested / awarded

AWARDED INTERNAL FUNDING

\$76,583

MEASURING GROWTH AND **IMPACT**



DONORS & SCHOLARSHIPS

Total Donors
2,738

Total Gifts, Grants and Pledges
\$6,977,442

Scholarships
777

Scholarship Dollars Awarded
\$1,252,056

FALL 2024 ENROLLMENT

Undergraduate
4,894

Master's
659

Doctorate
83

PA Enrollment
4,582

Out-of State
Enrollment
1,024

International
Enrollment
30

Total States
28

Total Countries
28

Total
5,636

PERCENT OF UNDERGRADUATE STUDENTS

Underrepresented
Minority Students **45.4%**

First Generation
Students* **32.4%**

Students
Who Receive
Financial Aid **82.4%**

Pell Awards **45.7%**

*Students who filed FAFSA



TOP 10 MAJORS FOR UNDERGRADUATE ENROLLMENT

Business Management 444	Sport Management 231
Psychology 375	Criminal Justice 223
Exercise Science 297	Undeclared 221
Early Childhood Education 274	Nursing 207
Biology 261	Computer Science 185

TOP 10 PA COUNTIES BY ENROLLMENT

Monroe 1,343
Northampton 543
Philadelphia 331
Lehigh 227
Pike 213
Montgomery 203
Bucks 180
Luzerne 154
Lackawanna 120
Carbon 86

ALUMNI NETWORK

Total Alumni

45,874

Top States

Pennsylvania 28,782	New York 1,954
New Jersey 6,682	Florida 1,783

FRESHMAN CLASS PROFILE FALL 2024

College of Arts & Sciences 568
College of Business & Management 318
College of Education 94
College of Health Sciences 270
Undeclared or Meta Majors 136

Freshman Enrollment 1,386
Average High School GPA 3.22

GUIDING OUR GROWTH

Leadership at ESU drives progress through collaboration, innovation, and a steadfast commitment to student success. The vision and dedication of our university leadership continue to shape ESU's path forward. Our growth is guided by those who believe in ESU's future - from trustees and cabinet members to deans and administrators who ensure that every decision supports our students and community.



COUNCIL OF TRUSTEES

L. Patrick Ross '67, Chair
John Pekarovsky III '07, Vice Chair
Paul E. Shemansky '96 M'01 M'04, Secretary
Edward P. Abraham
Frank A. Epifano
Thomas J. Grayuski '84
Ainslee Green '27
Marcus S. Lingenfelter '95
Tina L. Nixon '89
Elizabeth O'Brien '01
Tameko Patterson
Christopher M. Fiorentino, Ex-Officio

PRESIDENT'S CABINET

Kenneth Long, President
Margaret Ball, D.M.A., Provost and Vice President for Academic Affairs
Miguel Barbosa, Chief of Staff and Vice President for University Relations
Donna Bulzoni, Chief Financial Officer
Lorna J. Hunter, Ph.D., Vice President for Enrollment Management
Mary Frances Postupack, Vice President for Economic Development and Entrepreneurship
Michael C. Sachs, J.D., Interim Vice President for Administration and Accreditation
Robert Smith, Ed.D., Chief Information and Technology Officer
Santiago Solis, Ed.D., Vice President for Campus Life and Inclusive Excellence
Rich Santoro, Executive Director, ESU Foundation



DEANS

Nieves Gruneiro-Roadcap, M.F.A., Dean, College of Arts and Sciences

Sylvester Williams, J.D., Dean, College of Business and Management

Brooke Langan, Ed.D., Dean, College of Education

Brian Street, Ph.D., Dean, College of Health Sciences

Jennie Smith, Ed.D., Dean of Student Life

ATHLETIC ADMINISTRATION

Allen G. Snook Jr., D.H.Sc., Director of Athletics

Sarah Ross, Associate Athletic Director for Student Success/Senior Woman Administrator

Jim Glovach, Ed.D., Associate Athletic Director for Compliance

Shawn Munford, Ph.D., Faculty Athletics Representative

MARKETING & COMMUNICATIONS

Elizabeth Richardson, Director

Greg Knowlden, Assistant Director





GROWING FORWARD

As we celebrate a year of meaningful growth, we look ahead with confidence, purpose, and pride. With a strong foundation and a clear vision for the future, East Stroudsburg University is poised to continue rising together. Because together, we grow. One student, one discovery, one success story at a time.



ESU.edu

